

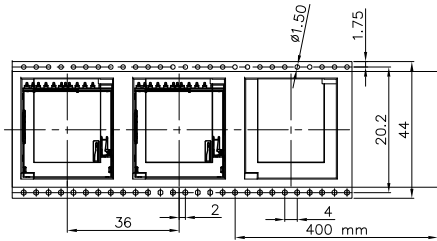


# 东莞市欧联电子科技有限公司

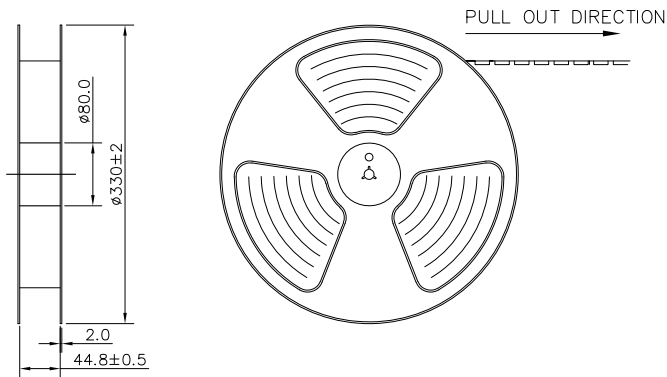
## 包装作业规范

### 包装作业图示及说明 (PACKING OPERATION DIAGRAM & INSTRUCTION)

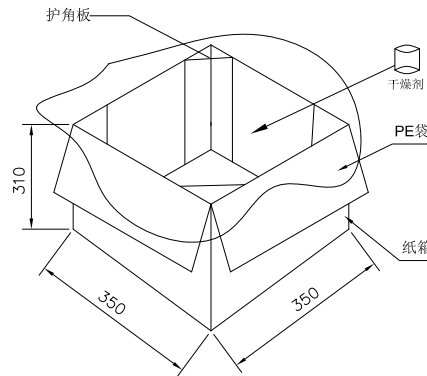
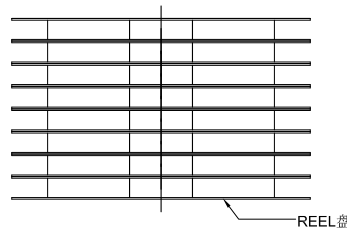
- 一.
- 1) 将成品一一放入REEL包装盘内,依同一方向放入 .
  - 2) 包装时,如图所示 .
  - 3) 一个REEL包装盘放置300个成品 .



- 二.
- 1) 装盘前先把前面空20pcs产品,然后再开始装盘, 尾端也需空10pcs产品,上带加长200mm.
  - 2) 装满成品的REEL包装盘如下图所示.




- 三.
- 1) 每箱装 6 盘REEL包装盘 .
  - 2) 每箱放置 1800 PCS 的成品 .



- 四.
- 1) 用TAPE將紙箱封實 .

#### 備註 (REMARK)

1. 若有未裝滿之零數箱,必須以緩衝材塞滿 .

GENERAL TOLERANCE	TOLERANCE	DWG.NO.	TW82-AP401-00	PART.NO.	TW82-AP401-**	DRAWN	L.M.J 2018.08.03	UNIT	mm	SCALE	NO SCALE
x.±0.50	x. ± 5°	REV.	A	TITLE	SD Push H3.15板上Molding型conn.	CHECKED		 <b>东莞市欧联电子科技有限公司</b> DONGGUAN OLN ELECTRONICS TECHNOLOGY CO., LTD.			
.x±0.25	.x ± 2°	SIZE	A4	SHEET	2 OF 2	APPROVED					
.xx±0.15	.xx ± 1°										